

MONTHLY MEMBERSHIP PROGRESS REPORT

District 13 OH4

Results as of: 1/31/2024

GMT:

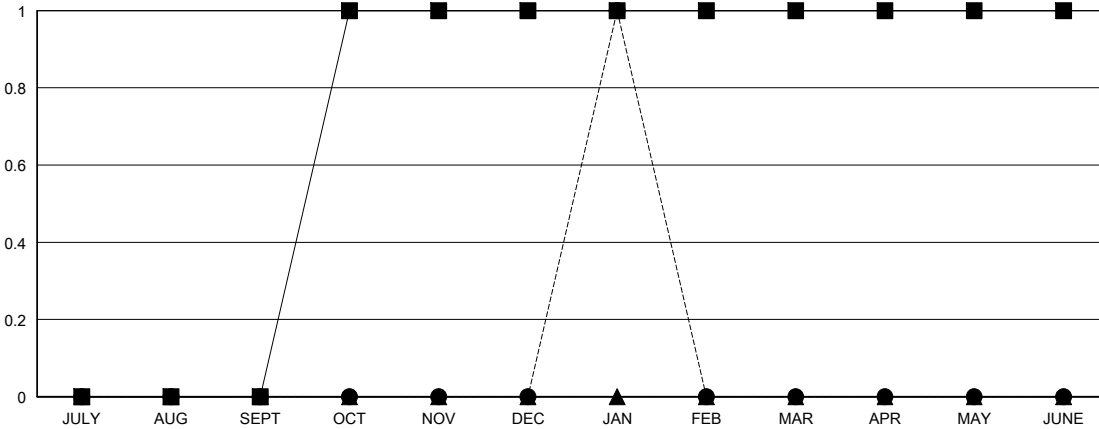
LOCATION OHIO

GMT CA

Clubs			
RESULTS FOR 2023-2024			
QUARTER	NEW CLUB GOAL	NEW CLUBS	DROPPED CLUBS
JULY/AUG/SEPT	0	0	0
OCT/NOV/DEC	1	0	0
JAN/FEB/MAR	0	1	0
APR/MAY/JUNE	0	0	0

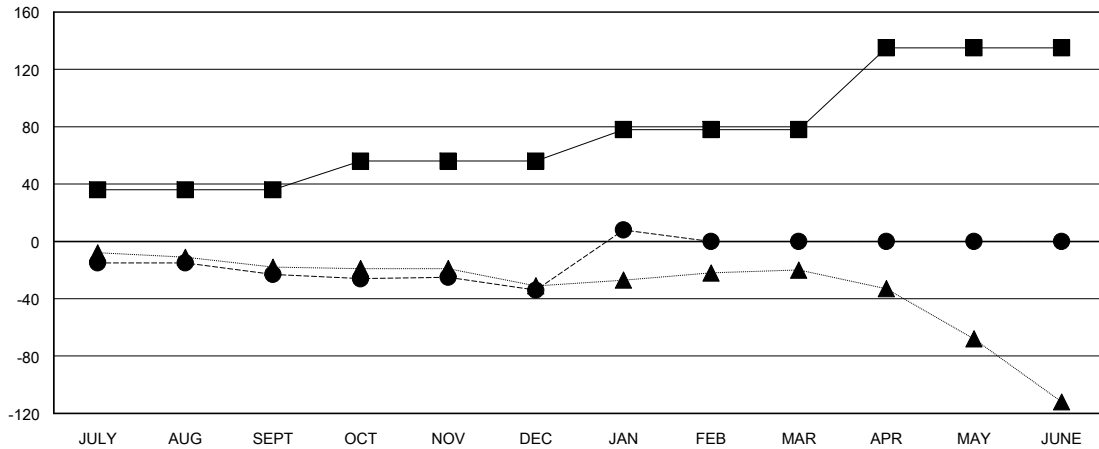
Members			
RESULTS FOR 2023-2024			
QUARTER	MEMBER GROWTH NET GOAL	MEMBER GROWTH ACTUAL	DROPPED MEMBERS ACTUAL (including transfers)
JULY/AUG/SEPT	36	17	39
OCT/NOV/DEC	20	26	35
JAN/FEB/MAR	22	57	15
APR/MAY/JUNE	57	0	0

GOALS AND ACTUAL NEW CLUBS CUMULATIVE



- - CURRENT YEAR GOALS FOR NEW CLUBS
- - CURRENT YEAR ACTUAL NEW CLUBS
- ▲ - LAST YEAR ACTUAL NEW CLUBS

GOALS AND ACTUAL MEMBERS CUMULATIVE



- - MEMBER GROWTH NET GOAL
- - MEMBER GROWTH ACTUAL
- ▲ - LAST YEAR MEMBERSHIP ACTUAL

DROPPED CLUBS: 0	
DROPPED MEMBERS	
DECEASED	14
CLUB CANCELLED	0
OTHER	75
TOTAL	89

23 CLUBS OF 50 ADDED 1 OR MORE NEW MEMBERS

GENDER DISTRIBUTION	
MALE	808 (63.03%)
FEMALE	473 (36.90%)

[CLICK HERE FOR CUMULATIVE MEMBERSHIP DATA](#)

TOTAL FAMILY UNIT MEMBERS	250
FAMILY MEMBERS PAYING HALF DUES	127